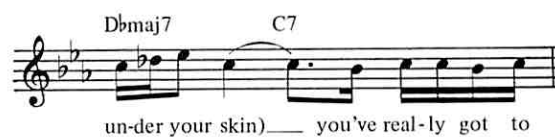
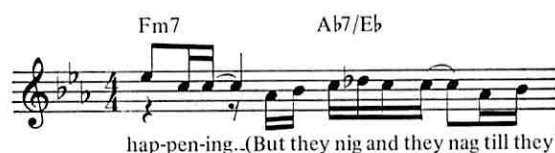
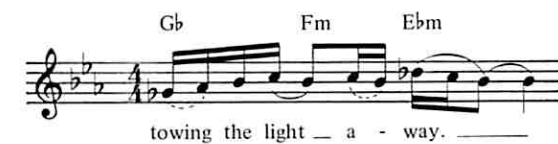
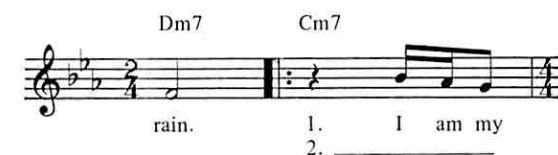
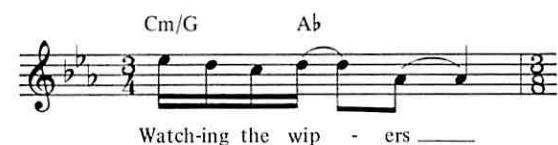


FULL HOUSE

Words and Music by
KATE BUSH

Steady tempo



Fm Gm7(b5)

Re - mem - ber your - self. —

Bbm7 Cm7 *To Coda* ♯

Stand back and see e - mo - tion get -

1. Fm

- ting you — up - tight. —

Bbm7 Dm

2. Fm D.%. at Coda ♯
Bbm C

- ting you — up tight. —

♯ CODA Fm

- ting you — up tight. —

Bbm7 Dm



2. My silly pride
 Digging the knife in
 She loves to come for her tide
 Surely by now I should know
 I can control my highs and my lows
 By questioning all that I do
 Examining every move
 Trying to get back to the rudiments
 (If they nig and they nag I'll just put in the boot)