

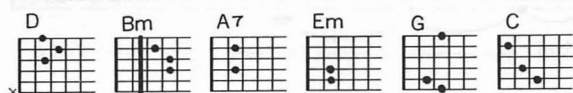
# Leave That Are Green

木の葉は緑

by Paul Simon

Capo: 2nd

## ■CHORD



(Cembalo)

Two staves of musical notation. The top staff is in treble clef, key of D major (two sharps), and common time. It features a piano introduction with eighth and sixteenth notes. The bottom staff is in bass clef, also in D major, with a similar rhythmic pattern. Chord labels D, Bm, and A7 are placed above the bottom staff.

I was twenty one years when I — wrote this song

Two staves of musical notation. The top staff is in treble clef, key of D major, and common time. It contains the melody for the first line of the song. The bottom staff is in bass clef, also in D major, with a similar rhythmic pattern. Chord labels A7, D, Em, A7, and D are placed above the bottom staff.

I'm twenty-two now — but I won't be — for long —

Two staves of musical notation. The top staff is in treble clef, key of D major, and common time. It contains the melody for the second line of the song. The bottom staff is in bass clef, also in D major, with a similar rhythmic pattern. Chord labels D, D, G, C, and D are placed above the bottom staff.

time — hur - rise on And the

Two staves of musical notation. The top staff is in treble clef, key of D major, and common time. It contains the melody for the third line of the song. The bottom staff is in bass clef, also in D major, with a similar rhythmic pattern. Chord labels D, G, and A7 are placed above the bottom staff.

© 1965 by PAUL SIMON

Rights for the World (excluding U.S.A., Canada, Mexico and South America) by PATTERN MUSIC LTD., London, England Rights for Japan controlled by SHINKO MUSIC PUB. CO., LTD.

Leaves That Are — Green — turn to brown, —

D C G A7 D

And they with-er with the wind, — And they

D Bm Bm

18

crum-ble in — your — hand. — Once my

A7 A7

— heart was filled with the love — of a girl —

D Em A7 D D

I held her close, but she fad-ed in the night — like a

D G C D

po-em I — meant to — write — And the Leaves That Are —

G A7 D C

Green — turn to brown, — And they

G A7 D D

with-er with the wind, — And they

Bm Bm

crum-ble in — your — hand. — I threw a peb - ble

A7 A7 D Em

in — a brook And watched the rip-ples — run a -

A7 D D G A7

way And they nev-er made — a sound. And the

D G A7 A7

Leaves That Are — Green — turned to brown, —

D C G A7 D

20

And they with-er with the wind, — And they

D Bm Bm

crum-ble in — your — hand. — Hel-lo, Hel-lo, — Hel-lo,

A7 A7 D Em

— Hel-lo, — Good - bye, Good-bye, Good - bye, Good-bye, —

A7 D D G C D

That's all there — is. — And the

Leaves That Are — Green — turned to brown,

Bm A7 A7

